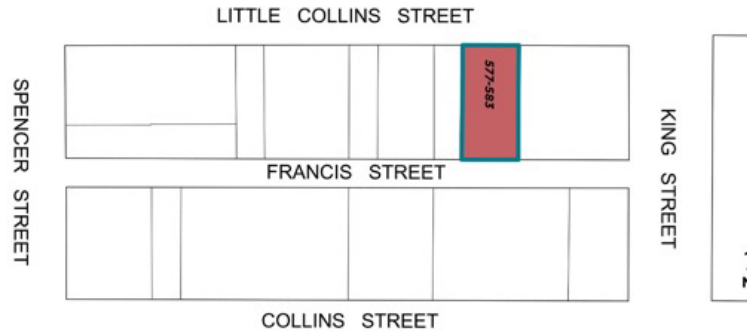


STATEMENT OF SIGNIFICANCE: Warehouses (577-583 Little Collins Street, Melbourne), April 2022

Heritage Place: Warehouses



PS ref no: HO1278



What is significant?

The buildings at 577-579 Little Collins Street, Melbourne, built in 1875, and 581-583 Little Collins Street, built in 1887 and altered in the mid-1920s.

Elements that contribute to the significance of the place include (but are not limited to):

At 577-579 Little Collins Street:

- The building's original external form, materials and detailing (both the Little Collins Street and Francis Street frontages)
- The building's high level of integrity to its original design
- Simple corniced parapet with arched pediment and moulded string course (Little Collins Street frontage)
- Round arched window openings with timber sash windows and stone sills- (Little Collins Street frontage).
- Gabled parapet and original pattern and size of fenestrations (Francis Street elevation).

More recent alterations made to the street level façade and the Francis Street elevation are not significant.

At 581-583 Little Collins Street:

- The building's original external form and materials (both the Little Collins Street and Francis Street frontages)

- The building's high level of integrity to its mid-1920s design
- Curved parapet with cornice below (Little Collins Street frontage)
- Original or early pattern and size of fenestrations (both the Little Collins Street and Francis Street frontages)
- Flat engaged pilasters.

More recent alterations made to the street level façade and the Francis Street elevation are not significant.

How it is significant?

The two buildings at 577-579 Little Collins Street and 581-583 Little Collins Street, Melbourne are of local historic and representative significance to the City of Melbourne.

Why it is significant?

The three-storey buildings at 577-583 Little Collins Street are historically significant for their association with manufacturing and warehousing in the City of Melbourne. 577-579 Little Collins Street, together with the interconnected building at 16-18 Francis Street at the rear, are historically significant as a flour mill complex known as City Flour Mills constructed for Russell and Gillespie in 1875. 581-583 Little Collins Street and its extension through to Francis Street is historically significant as a warehouse occupied by a variety of merchants and importers. (Criterion A)

The buildings at 577-583 Little Collins Street and extending through to 16-18 Francis Street are representative examples of brick and render warehouse buildings constructed in the Victorian period in the City of Melbourne. Constructed in 1875 (577-579) and c1887 (581-583), with the façade of 581-583 altered in the 1920s, the pair of warehouses demonstrate the warehouse typology that was an important part of the urban landscape of nineteenth century Melbourne. Despite some changes to their exterior windows, particularly to those of 581-583 Little Collins Street, both buildings remain legible, including the view of them from Francis Street. (Criterion D)

Primary source

Hoddle Grid Heritage Review (Context & GJM Heritage, 2020) (updated March 2022)