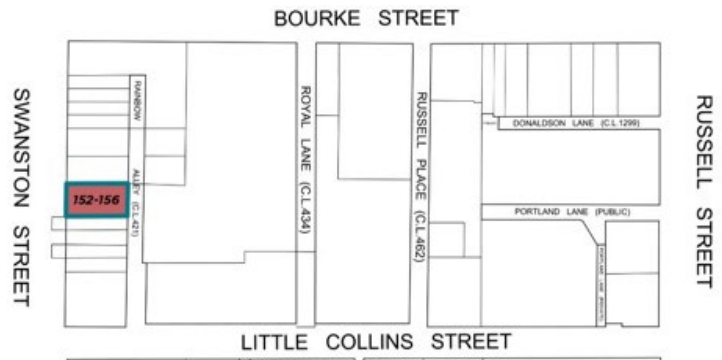


STATEMENT OF SIGNIFICANCE: Former Bank of Australasia (152-156 Swanston Street, Melbourne), April 2022

Heritage Place: Former Bank of Australasia



PS ref no: HO1295



What is significant?

The former Bank of Australasia at 152-156 Swanston Street, Melbourne, constructed in 1938 and designed by A & K Henderson.

Elements that contribute to the significance of the place include (but are not limited to):

- The building's original external form, materials and detailing
- The building's high level of integrity to its original design
- The pitched mansard roof, balustraded parapet with urns and cornice
- The original pattern and size of fenestration
- The recessed entry.

Later alterations at ground level are not significant.

How it is significant?

152-156 Swanston Street, Melbourne is of local historic, representative and aesthetic significance to the City of Melbourne.

Why it is significant?

The former Bank of Australasia at 152-156 Swanston Street, Melbourne is historically significant for its association with the interwar boom in banking, financial services and insurance that followed the recovery from the great economic depression of the 1890s. The interwar period saw many banks

construct new premises in the central city, contributing to Melbourne's growth and consolidation of a large, city-based economy. (Criterion A)

152-156 Swanston Street is representative both of the form and development of commercial buildings in the interwar period and as a work of prominent city-based architects A & K Henderson. It represents a substantially intact interwar bank that compares favourably to other examples on the HO including the former State Savings Bank, 615-623 Collins Street and the former Union Bank at 351-357 Elizabeth Street. It is also a modest example of the work of A & K Henderson who completed many commissions for major banks throughout the 1920s and 30s. 152-156 Swanston Street employs architectural classicism which was routinely used for their commercial projects. (Criterion D)

152-156 Swanston Street is of aesthetic significance for its contribution to the Swanston Street South Precinct. Its form and scale are both prominent, yet not out of scale with other buildings in the precinct. 152-156 Swanston Street demonstrates aesthetic value in its classically styled façade that is of high integrity. Particular characteristics include the stucco finish, vertically oriented windows of graduating proportions and distinctive decorative treatment, reflecting the importance of each floor. Other features include the cornice and balustraded parapet with urns. Amongst commercial buildings, the roof feature with dormer windows and an attic floor is unusual. A further characteristic of the style and period, and integral to the building is the cantilevered verandah. (Criterion E)

Primary source

Hoddle Grid Heritage Review (Context & GJM Heritage, 2020 (updated March 2022))