

‘Windarra’, 40 Greenhills Road Pakenham, Incorporated Plan - Permit Exemptions, July 2021

1.0 Application

This incorporated plan applies to the individually listed heritage place at 40 Greenhills Road, Pakenham as shown on Cardinia Planning Scheme Map No. 16HO.

2.0 Statement of significance

Address:	40 Greenhills Road, Pakenham	Name:	Windarra
Place type:	Private residential	Grading:	Significant
PS ref no:	HO14	Constructed:	Farmhouse - c1910-16 Trees - various

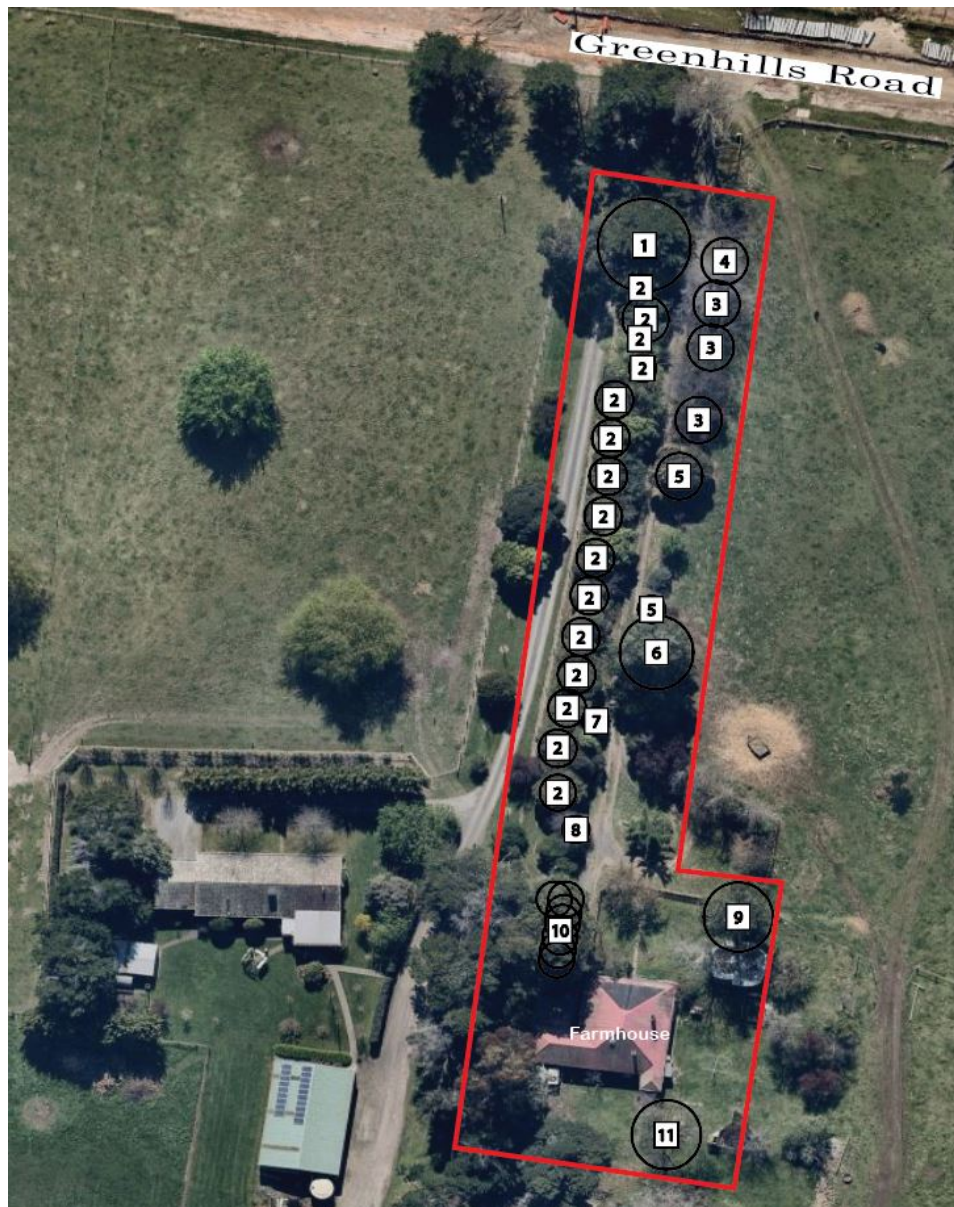


Figure 1: Detail of curtilage for HO14 – shown by solid red line

Table 1: Tree Protection Table – Refer Figure 1

Tree ID	Botanical name	Heritage and aboriginal assessment comments
1	<i>Hesperocyparis macrocarpa</i>	Retain as part of driveway planting
2	Tree group (15) - <i>Melaleuca linariifolia</i>	Retain as part of driveway planting
3	Tree group (3) - <i>Ulmus procera</i>	Retain as part of boundary planting
4	<i>Quercus palustris</i>	Retain as part of boundary planting
5	Tree group (2) - <i>Photinia serratifolia</i>	Retain as part of boundary planting
6	<i>Grevillea robusta</i>	Retain as part of boundary planting
7	<i>Euonymus japonicus</i>	Retain as part of border/driveway planting
8	<i>Crataegus monogyna</i>	Retain as part of border/driveway planting
9	<i>Grevillea robusta</i>	Retain, individually noted in Statement of Significance
10	Tree group (3) - <i>Hesperocyparis macrocarpa</i>	3 specimens inter-planted along row. Retain as part of original windrow planting
11	<i>Ulmus glabra</i> 'Lutescens'	Retain, individually noted in Statement of Significance

3.0 No Planning Permit Required

Under Clause 43.01-3 of the Cardinia Planning Scheme, no planning permit is required to construct or carry out works at 40 Greenhills Road, Pakenham:

- For routine maintenance to a building that would not change the appearance of that building
- For works to decommission the existing driveway
- To remove, destroy or lop a tree that is not identified in Table 1: Tree Protection Table in this Incorporated Plan

4.0 Primary source

- *Pakenham South Employment Precinct Post-Contact Heritage Assessment*, Context Pty Ltd, 2014 (revised January 2020)
- *Pakenham South Employment Background Report*, October 2019 (updated August 2020)